

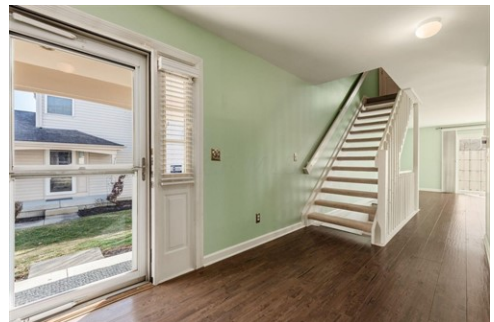


\$ 269,900



2511 Hyacinth Ln Unit 56A, Columbus, OH 43235

- » Beds: 2 | Baths: 2 Full
- » MLS #: 224004105
- » Condominium | 1,152 ft² | Lot: 871 ft²
- » Updated Kitchen - Newer Cabinets, Granite, SS Appliances
- » Updated Baths
- » More Info: 2511HyacinthLane.com



Mike Whiteman
 Andy Whiteman
 (614) 406-5600 (Mike / Text or Call)
 (614) 425-4500 (Andy / Text or Call)
 mike@whitemangroup.com
 http://www.whitemangroup.com



OFFERS RECEIVED, ALL OFFERS DUE BY 6PM FRIDAY 2/16. Welcome to this fantastic end unit condo in Bethel Village with outstanding updates & meticulous care! Entering from the covered front porch, you will be greeted by the open floorplan with plenty of living & storage space. The first floor features updated kitchen w/granite, newer cabinets, stainless steel appliances, dining space, generous sized great room, half bath, garage w/storage niche. Upstairs offers 2 bedrooms with 2 full updated baths. Abundance of natural light throughout. The full basement is ready to finish with rough-in for bath, storage & laundry. Other updates - HVAC, HWT, Closet Organizers, Replacement Windows & Sliding Door, Wood Floors, Large Private Deck. HOA fee includes water, sewer, pool, clubhouse & fitness gym.

